

Major

Recommendations

East Valley Gateway FaB Cluster

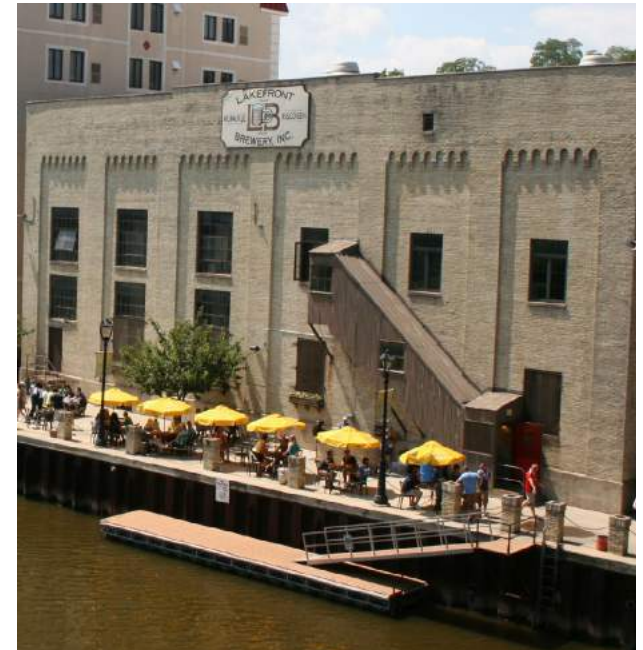
Objective: Create an urban food and beverage (FaB) manufacturing cluster in the form of a new east end Menomonee Valley Industrial Center, similar in size and scope - if not in contiguous acreage and ownership, and integrated into a waterfront setting with complimentary uses and amenities.

Strategies & Recommendations:

- Construct new light industrial development on approximately 40 acres and up to approximately 700,000 square feet of buildable area.
- Invest in roadway improvements that will activate four major, job-producing redevelopment sites totaling approximately 22 acres, all with waterfront access: the We Energies coal pile site, the former Stollenwerk property east of We Energies, the RACM-owned 260 N. 12th property, and Petit Point.
- Maximize space with the utilization of the vacant land under the Marquette Interchange and I-94 for shared parking and storm water management.
- With the establishment of the Food Maker School and Center of Excellence by the Milwaukee Area Technical College and FaB Wisconsin at S. 8th and National Avenue in Walker Square, and adjacent to the Pierce and Bruce manufacturing district, focus recruiting efforts on attracting food and beverage manufacturers.



Looking northeast at a conceptual FaB development with canal side access.



Waterfront dining at Lakefront Brewery that could be replicated at a future Valley FaB business.



A built out and fully connected valley FaB District